

CB 60 - CB60 THERM

TRANSPARENT CYLINDRIC BOX IP67 WITH INSIDE HEATHER



Suitable models

LC3 PXXX

Housing Material

Thermoplastic PMMA (polymethyl methacrylate)

Mounting

SMO (orientable support brackets)

Output

Connectors M12

Protection Degree

IP67

Resistance to the atmospheric agents

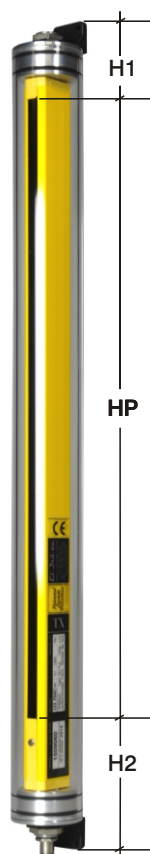
- **Alkaline substances**
- weak acid
- neutral soap
- alcohol 60°

Not resistance to the chemical agents

- **aliphatic hydrocarbon**
- **hydrocarbon aromatic**
- **composit**
- **gas oil**

TECHNICAL FEATURES TRANSPARENT CYLINDRIC BOX

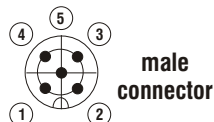
Breaking load (5mm/min)	73 MPa ISO/R 527
Bumps resistance (+23°C)	6 KJ/m2 ISO 179/1 e U
Elastic module at traction	3200 MPa DIN53547
Linear thermic dilatation	0,8 E-4/PC ASTM E831
Deformation to the heat	0,45 MPa ISO75

**models LC3**
 $HT = HP + H1 + H2$
 $H1 = 69 \text{ mm}$
 $H2 = 106 \text{ mm}$
LEGEND

- 1 = Transparent thermoplastic I.R.
- 2 = Tin cap aluminium
- 3 = Elastomeric gasket
- 4 = Hexagonal nut 1/2 inch x 4 mm INOX A2
- 5 = Plug M12
- 6 = Orientable bracket in polyamides reinforced in glass fiber

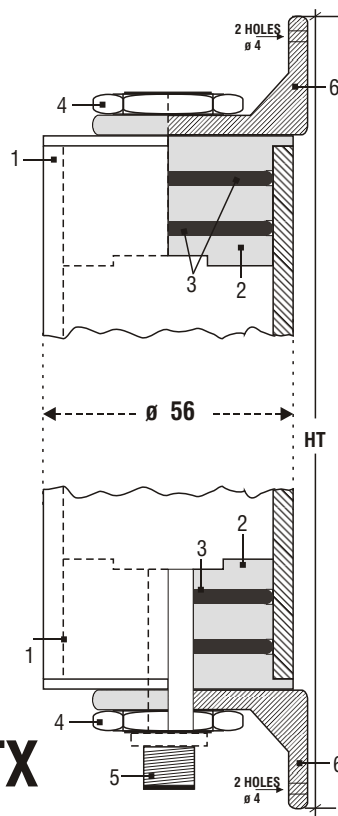
CONNECTIONS FOR THE CB 60**RX**

- 1) White = EDM / (SRS optional)
- 2) Brown = + 24Vdc
- 3) Green = SW1
- 4) Yellow = SW2
- 5) Grey = CONTACTS IN ALARM STATE
- 6) Pink = -
- 7) Blue = -
- 8) Red = MODE
- Shield = \perp

**TX**

- 1) Brown = + 24Vdc
- 2) White = TEST INPUT
- 3) Blue = -
- 4) Black = TEST INPUT
- 5) Grey = N.C.
- Shield = \perp

TEST INPUT = Opening contact TEST INPUT (PIN2/4) is simulated the interruption of the curtain and testing the correct opening of the outputs SW1 - SW2 of the receiving unit

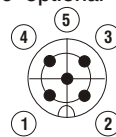
**CONNECTIONS FOR THE CB60 THERM**

N.B. The lightguards in the CB THERM can not be implemented with the optional SRS/EDM

RX

- 1) White = + 24Vdc
- 2) Brown = + 24Vdc
- 3) Green = SW1
- 4) Yellow = SW2
- 5) Grey = Power supply internal heater 24Vdc
- 6) Pink = -
- 7) Blue = -
- 8) Red = -
- Shield = \perp

male connectors

**TX**

- 1) Brown = + 24Vdc
- 2) White = TEST INPUT
- 3) Blue = -
- 4) Black = Power supply internal heater 24Vdc
- 5) Grey = -
- Shield = \perp

TEST INPUT = Opening contact TEST INPUT (PIN2/3) is simulated the interruption of the curtain and testing the correct opening of the outputs SW1 - SW2 of the receiving unit

HOW TO ORDER

Product Code

CB60**CB60 THERM**

WITH INSIDE HEATHER

Via Pergolesi 30 - 20851 LISSONE (MB) - www.elindco.it

MAY 2015

The manufacturer has the right to modify the products and the details contained in this TECHNICAL SHEET whenever necessary without previous notification.
EL.IND.CO. is not responsible for an improper use of its products.

page 2/2